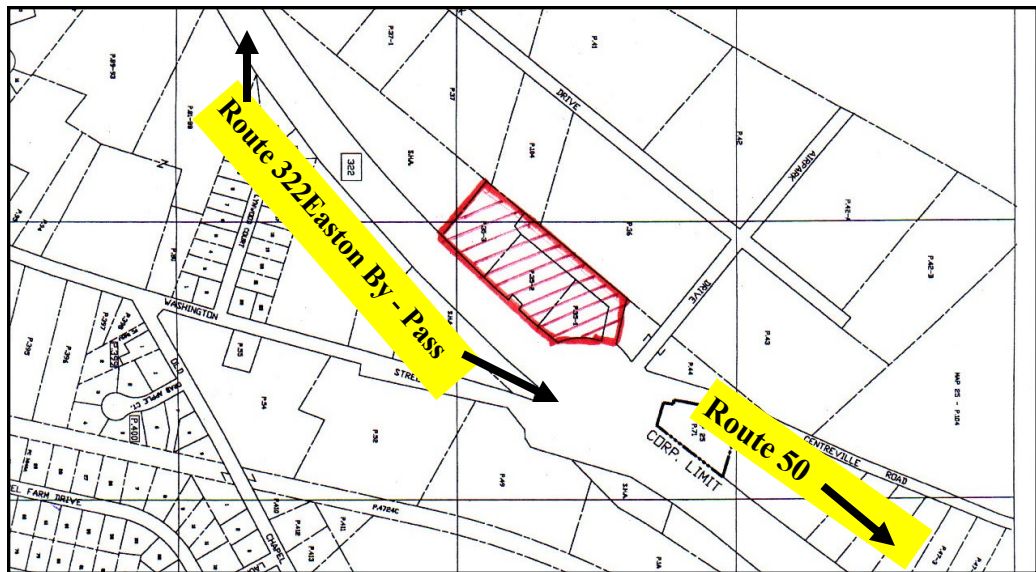


# FOR SALE OR LEASE

Freestanding Building Extensive Highway Frontage  
Industrial Office/Shop with Yard Zoning

**8942 Centreville Road Easton, Maryland 21601**

- 4,000 Sq. Ft. +/- Freestanding Building
- 4.08 Acres +/- over 550' highway frontage
- Plenty of On-Site Parking
- Public Water and Sewer
- Building adaptable to variety of uses
- Real Estate Taxes \$5,434.03/ year
- Zoned I-1 (Light Industrial)
- ADT 16-19,000 vehicles/day (traffic light controlled intersection)
- **Price Reduced: \$495,000.00**
- Lease 4000 sq ft +/- Bldg. On One Lot for \$4,700.00/month NNN
- Additional Development Ground/Parking



For more information call:

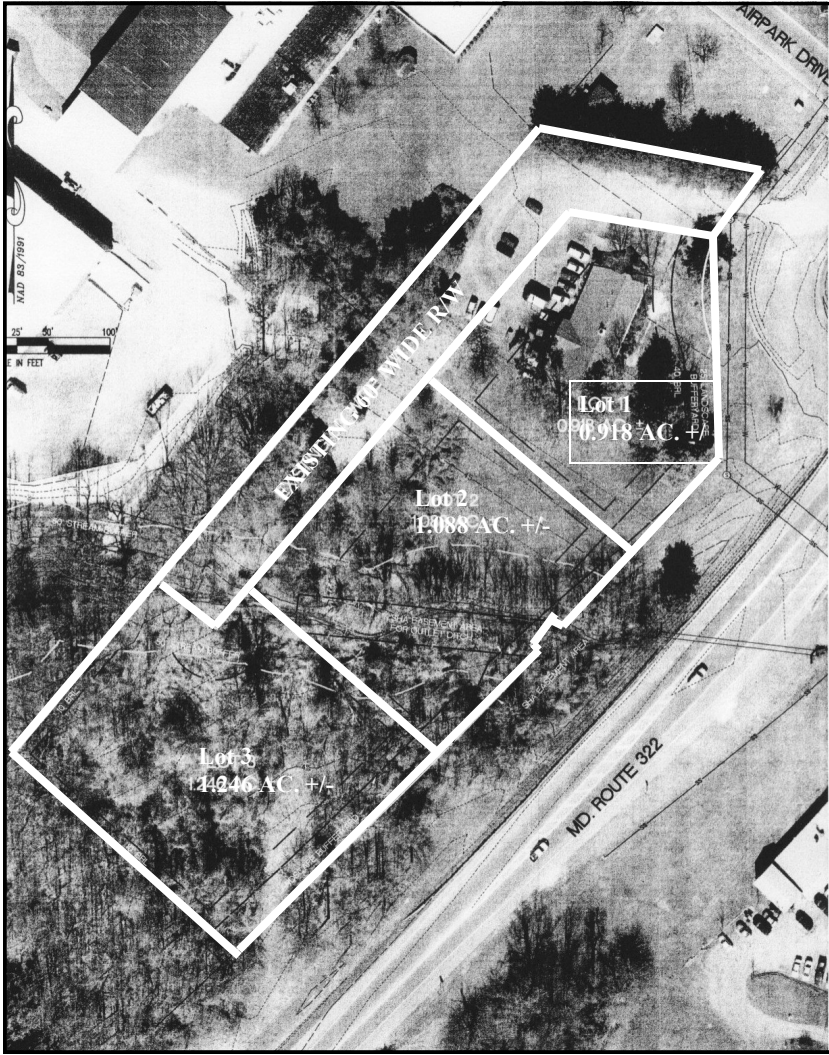
**Brian Hobbs**  
**301-937-2188**



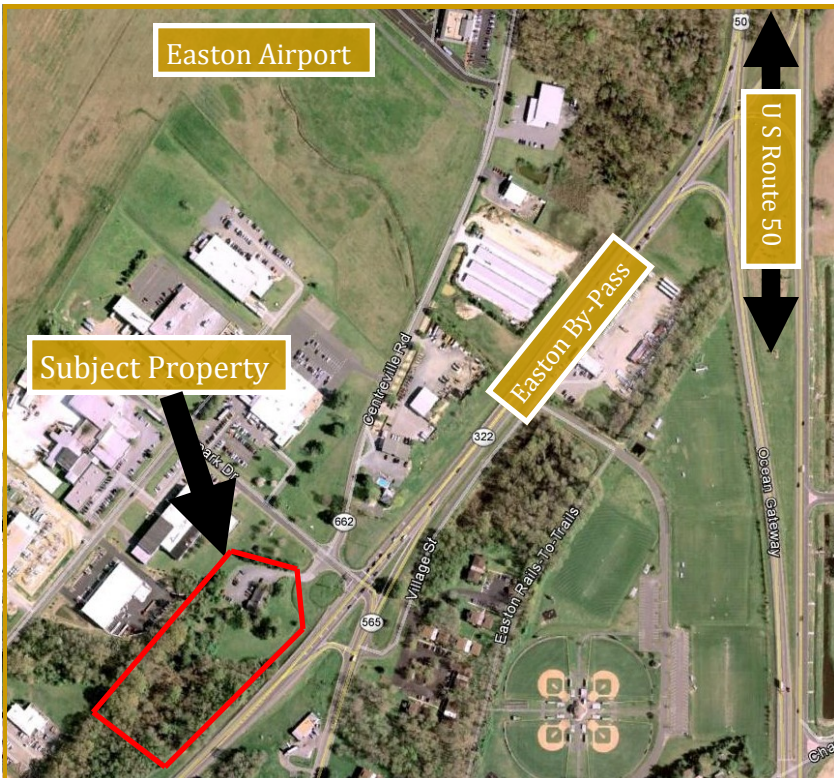
**Hobbs Associates, Inc.**  
Commercial/Industrial Real Estate

*The information contained herein has been given to us by the owner of the property or obtained from sources we deem reliable. No warranty or representation, express or implied, is made as to the accuracy of the information contained herein, and same is submitted subject to errors, omissions, change of price, sale or withdrawal without notice and to any special listing conditions imposed by our principals. It is the responsibility of interested parties to independently verify all information about the property and determine if it will satisfy the interested parties needs.*

# 8942 Centreville Road, Easton, Maryland 21601



Consists of 4.08 acres +/- situated at a Traffic



For more information call:

**Brian Hobbs**  
**301-937-2188**

[BHobbs@TheWarehouseBroker.com](mailto:BHobbs@TheWarehouseBroker.com)

*The information contained herein has been given to us by the owner of the property or obtained from sources we deem reliable. No warranty or representation, express or implied, is made as to the accuracy of the information contained herein, and same is submitted subject to errors, omissions, change of price, sale or withdrawal without notice and to any special listing conditions imposed by our principals. It is the responsibility of interested parties to independently verify all information about the property and determine if it will satisfy the interested parties needs.*

# Floor Plan - 8942 Centreville Road, Easton, MD

